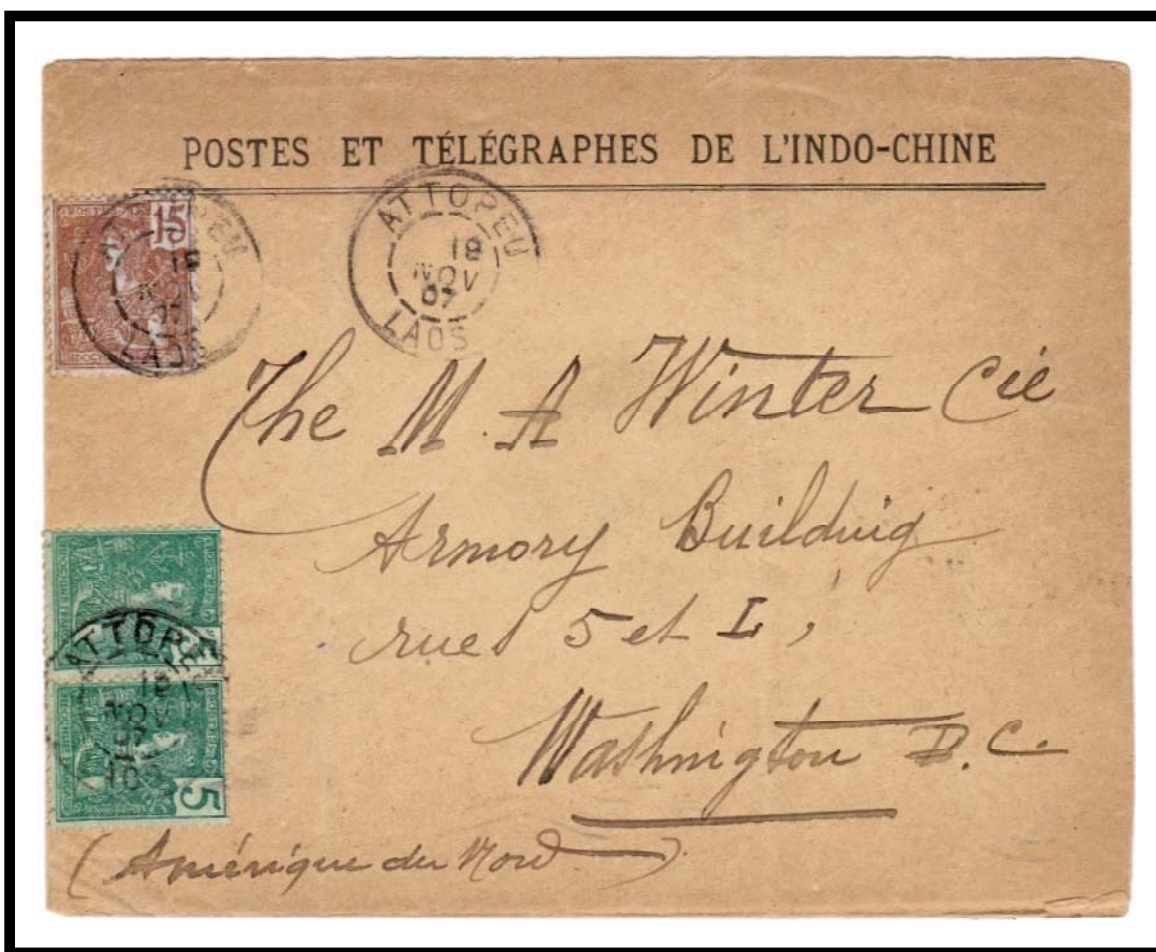


ATTOPEU  
LAOS

The first postmark recorded for Attopeu was in the type E2 format. The postmark was struck on this Post and Telegraph Office stationery for a 1907 mailing to the United States.



POSTMARK TYPE: E2  
PERIOD OF USE: 1899-1908



POSTAL MARKINGS  
ATTOPEU LAOS 18 NOV 07  
REVERSE  
BASSAC LAOS 24 NOV 07  
WASHINGTON, D.C. JAN 6 1908

ATTOPEU  
LAOS

After retirement of its type E2 postmarks, Attopeu's type G1 postmark saw extended service. It remained in use for over two decades.



POSTMARK TYPE: G1  
PERIOD OF USE: 1928-48



POSTAL MARKINGS  
ATTOPEU LAOS 8-11 29

## ATTOPEU LAOS

The Attopeu post office kept its type G1 postmark in service for two decades. The latest known use is 1948.



POSTMARK TYPE: G1  
PERIOD OF USE: 1928-48



POSTAL MARKINGS  
ATTOPEU LAOS 6-12 48  
REVERSE  
SAIGON R.P. COCHINCHINE 17-12 48

Ban Don's post office operated from 11 September 1903 to 1 April 1916. This example is the only known postmark from this post office.



INDO-CHINE FRANÇAISE

CARTE POSTALE

(Ce côté est exclusivement réservé à l'adresse)

INDO-CHINE

13  
AVRIL  
07

5

5

5

POSTAL MARKINGS  
BAN DON LAOS 3 AVRIL 07



## BANNAMONE LAOS

The Bannamone post office opened on 21 January 1904. While type E postmarks have been reported, this example is the only known example of a type F1 postmark from Bannamone.



POSTMARK TYPE: F1  
PERIOD OF USE: 1912



### POSTAL MARKINGS

BANNAMONE LAOS 11 FEVR 12

REVERSE

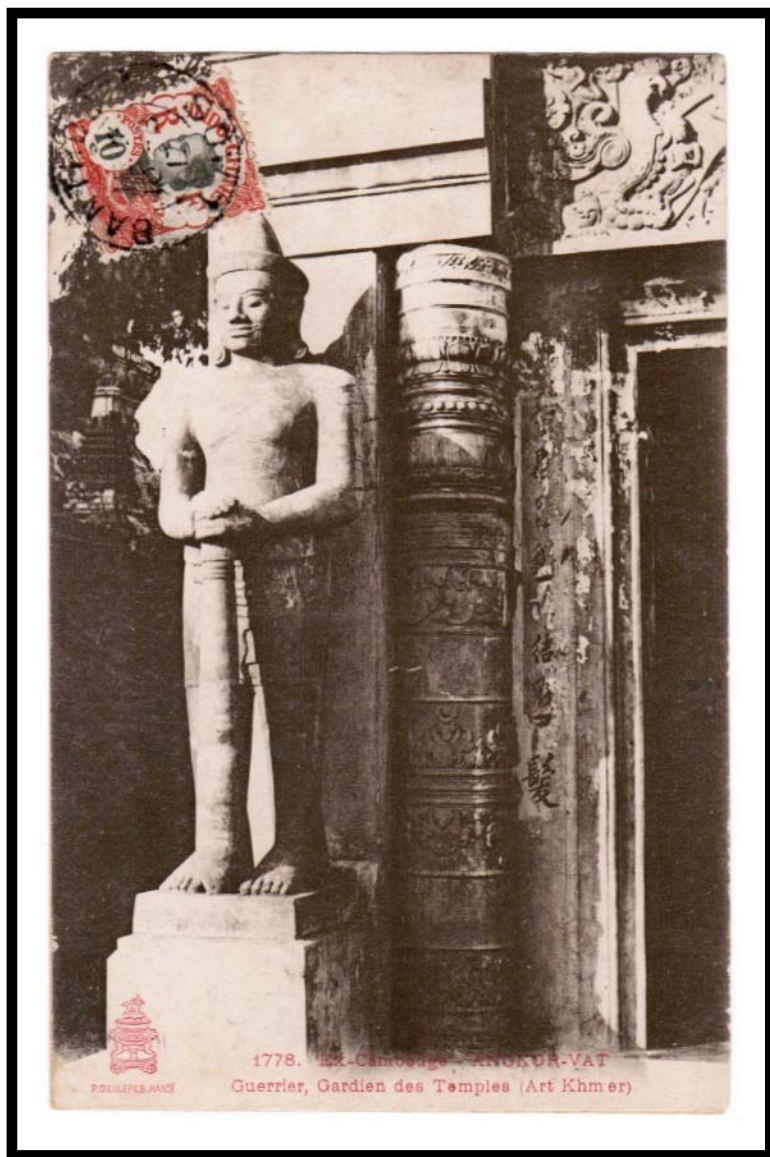
VIEN-TIANE LAOS 25 FEVR 12

SAIGON-CENTRAL COCHINCHINE 5 MARS 12

ARNAVILLE MUERTE ET MLE 9-4 12

## BANTHOUET LAOS

Even though the small Banthouet post office operated from 1903 to 1945, its postmarks are rare. The type E1(ch) postmark is only known from a single year, 1917.

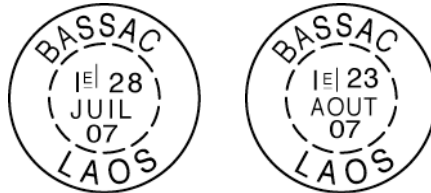


POSTMARK TYPE: E1(ch)  
PERIOD OF USE: 1917

POSTAL MARKINGS  
BANTHOUET LAOS 10-3 17

## BASSAC LAOS

Multiple attempts to find the addressee for a postcard sent from Saigon in 1907 resulted in two transit postmarks from Bassac approximately one month apart.



POSTMARK TYPE: E2  
PERIOD OF USE: 1894-1917



### POSTAL MARKINGS

SAIGON-CENTRAL COCHINCHINE 28 JUIN 07

BASSAC LAOS 28 JUIL 07

BASSAC LAOS 23 AOUT 07



## BASSAC LAOS

Bassac was located on the border with Thailand. Bassac was also the name given to the surrounding province even though Pakse was the chief town. Its postmark was a type E2 device.



POSTMARK TYPE: E2  
PERIOD OF USE: 1894-1911



POSTAL MARKINGS  
BASSAC LAOS 23 MARS 05  
CHARGÉ  
LIGNE N PAQ. FR. N° 7 8 AVRIL 05

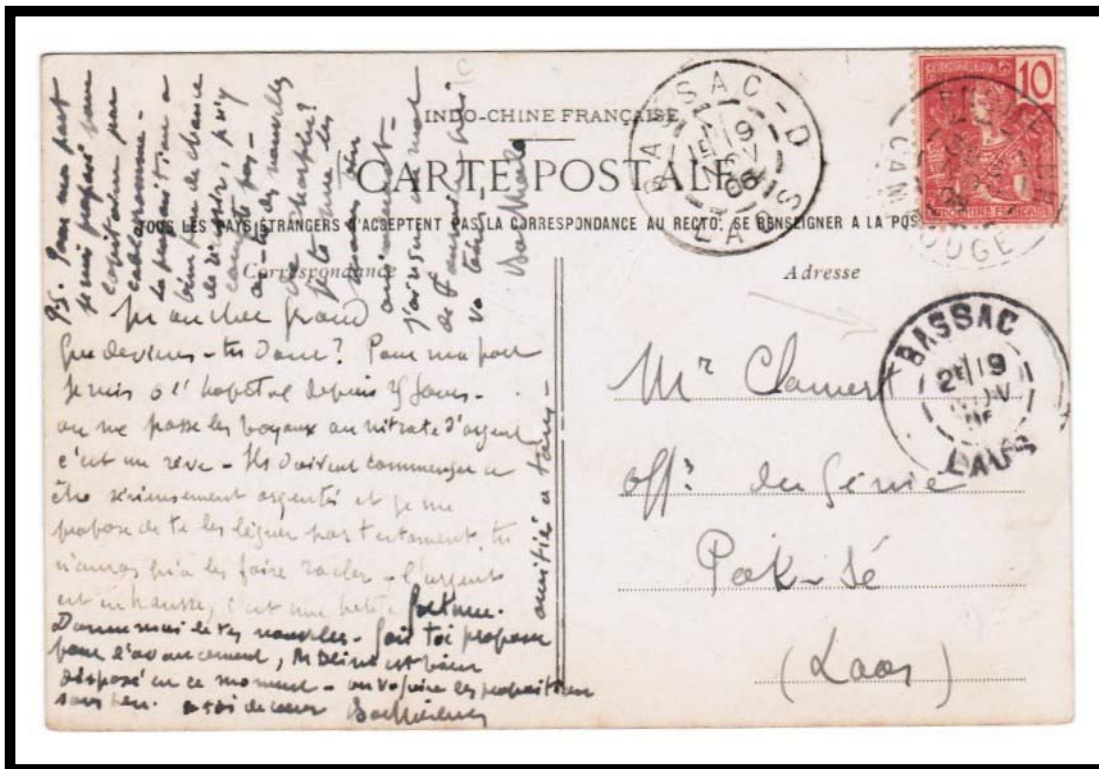


# BASSAC-D LAOS

Bassac was alternately under the control of Siam and Indochina. The "D" signified "rive droite" or "right bank." The postmark entered service in 1908 but was soon retired in 1911.



POSTMARK TYPE: E2  
PERIOD OF USE: 1908-11



POSTAL MARKINGS  
PHNOMPENH CAMBODGE 5 NOV 08  
BASSAC LAOS 19 NOV 08  
BASSAC-D LAOS 19 NOV 08

BONENG  
LAOS

The secondary post office at Boneng opened on 16 February 1928. Only the type G postmark is known from Boneng until the post office closed in 1945. However, two very different formats were used. The first style used lettering typical of the type G postmarks of the period.



POSTMARK TYPE: G, style 1  
PERIOD OF USE: 1928-45



POSTAL MARKINGS  
BONENG LAOS 23-8 39  
REVERSE  
THAKHEK LAOS 23-8 39  
SAIGON-CENTRAL COCHINCHINE 26-8 39

BONENG  
LAOS

Boneng's second style of type G postmark utilized wide, thick lettering that was distinctly different from other type G postmarks of the time. Apparently, both postmark styles were in service concurrently for Boneng.



POSTMARK TYPE: G, style 2  
PERIOD OF USE: 1928-45



POSTAL MARKINGS

BONENG LAOS 18-9 36  
registration label

REVERSE

SAVANNAKHET LAOS 20-9 36  
SAIGON-CENTRAL COCHINCHINE 23-9 36



BONENG  
LAOS

While the postal service usually used black ink for postal markings including postmarks, occasionally blue ink was substituted as in the case of this airmail letter to France in 1936.



POSTMARK TYPE: G, style 2  
PERIOD OF USE: 1928-45



POSTAL MARKINGS  
BONENG LAOS 13-2 36 (blue)  
REVERSE  
THAKHEK LAOS 15-2 36

## CAMP DU TRAN NINH LAOS

Camp du Tran Ninh was a Lao settlement that grew up around a military camp. Only a single postmark, in the type G format, is known from this town.



POSTMARK TYPE: G  
PERIOD OF USE: 1936-39

### POSTAL MARKINGS

CAMP DU TRAN NINH LAOS 3-5 38  
framed Hanoi-Marseille routing instruction

### REVERSE

VINH ANNAM 5-5 38  
HANOI R.P. TONKIN 6-5 38  
ORAN - R.P. ORAN 13-5 1938

## CAMP DE KHANG KHAY LAOS

Originally created to serve the military, the name of Camp du Tranninh changed to Camp de Khang-Khay in 1939. It remained open through 1945.



POSTMARK TYPE: G  
PERIOD OF USE: 1939-42



### POSTAL MARKINGS

CAMP DE KHANG-KHAY LAOS 25-12 39  
multiple French Post Office resealing labels  
SAINT-AMARIN HAUT-RHIN 2-2-40

REVERSE

HUE ANNAM 26-12 39



## CAMP DE KWANG KHAY LAOS

In 1939, the name of Camp du Tran Ninh changed to Camp de Kwang Khay in its postmarks. This example from October shows that available registration labels still carried the prior designation.



POSTMARK TYPE: G  
PERIOD OF USE: 1939-42



### POSTAL MARKINGS

CAMP DE KWANG KHAY LAOS 10-10-39  
registration label  
censor's signature handstamp (Senegal)

### REVERSE

VINH ANNAM 12-10-39  
SAIGON-CENTRAL COCHINCHINE 14-10-39

## CAMP DE KWANG KHAY LAOS

The final year of use of Camp de Khang Khay's type G postmark was in 1942.  
This registered letter from November 1942 would place it among the last know usages.



POSTMARK TYPE: G  
PERIOD OF USE: 1939-42



POSTAL MARKINGS  
CAMP DE KWANG KHAY LAOS 17-11 42  
registration label  
REVERSE  
HANOI B<sup>S</sup> TONKIN 20-11 42  
HANOI R.P. TONKIN 20-11 42

## CAMP DE KHANG-KHAY LAOS

The Camp de Khang-Khay post office closed in 1945. The last postmark known for Camp de Khang-Khay was a short-lived, hexagonal type H1 device from 1943-44.



POSTMARK TYPE: H1  
PERIOD OF USE: 1943-44



### POSTAL MARKINGS

CAMP DE KHANG-KHAY LAOS 7-3 44  
VINH ANNAM 10-3 44  
HANOI R.P. BIS TONKIN 13-3 44

### REVERSE

CAMP DE KHANG-KHAY LAOS 7-3 44  
registration label

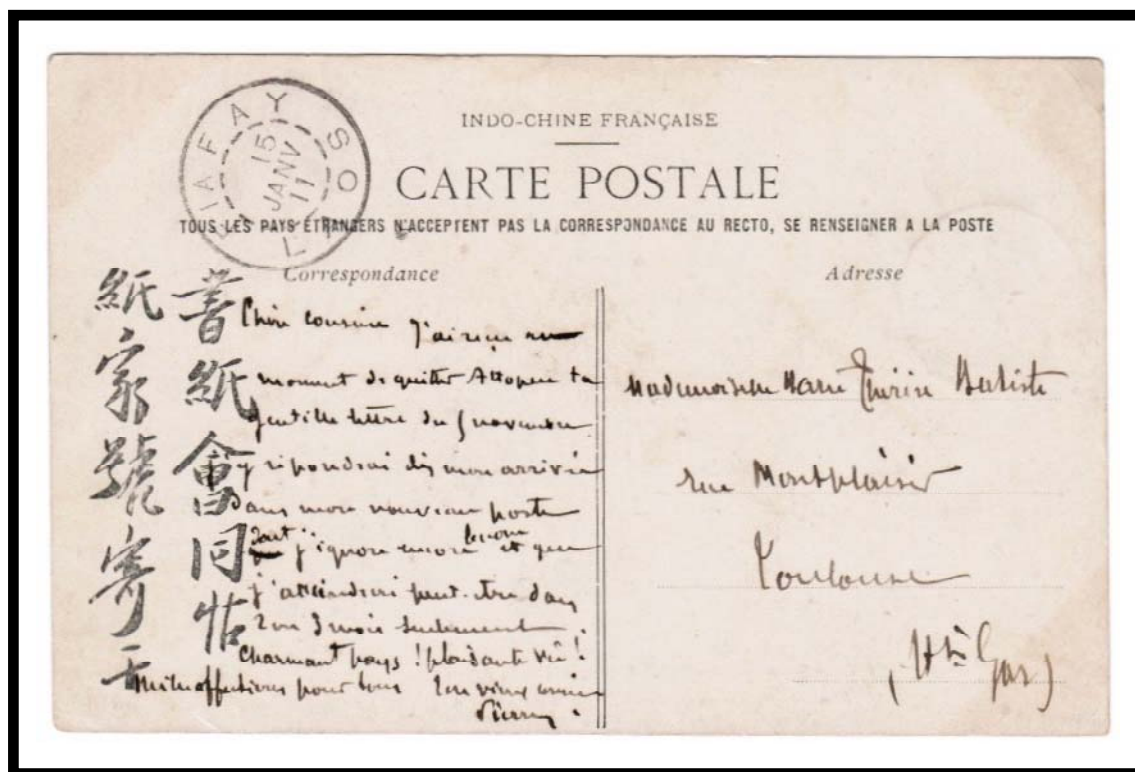


# FIAFAY LAOS

The Fiafay post office opened on 23 June 1910. Its first postmark was a type E2 device. This is the earliest known example of a postmark from Fiafay.



POSTMARK TYPE: E2  
PERIOD OF USE: 1911-27



POSTAL MARKINGS  
FIAFAY LAOS 15 JANV 11  
REVERSE  
FIAFAY LAOS 15 JANV 11

## HATSAIKHOUNE LAOS

The post office at Khong closed on 4 December 1942 and transferred to Hatsauikhouné. This cover bears the only known examples of Hatsaikhouné's type G1 postmark.



POSTMARK TYPE: G1  
PERIOD OF USE: 1950



POSTAL MARKINGS  
HATSAIKHOUNE LAOS 26 1950  
airmail label

# HOUEISAI LAOS

Houeisai's type E2 postmark was the first that used the single-word "HOUEISAI" spelling. In use for only three years, the post office soon replaced it with a type G postmark.



POSTMARK TYPE: E2  
PERIOD OF USE: 1925-28



POSTAL MARKINGS  
HOUEISAI LAOS 16 FEVR. 26  
REVERSE  
BANGKOK 10 A 27 • 2 • 26

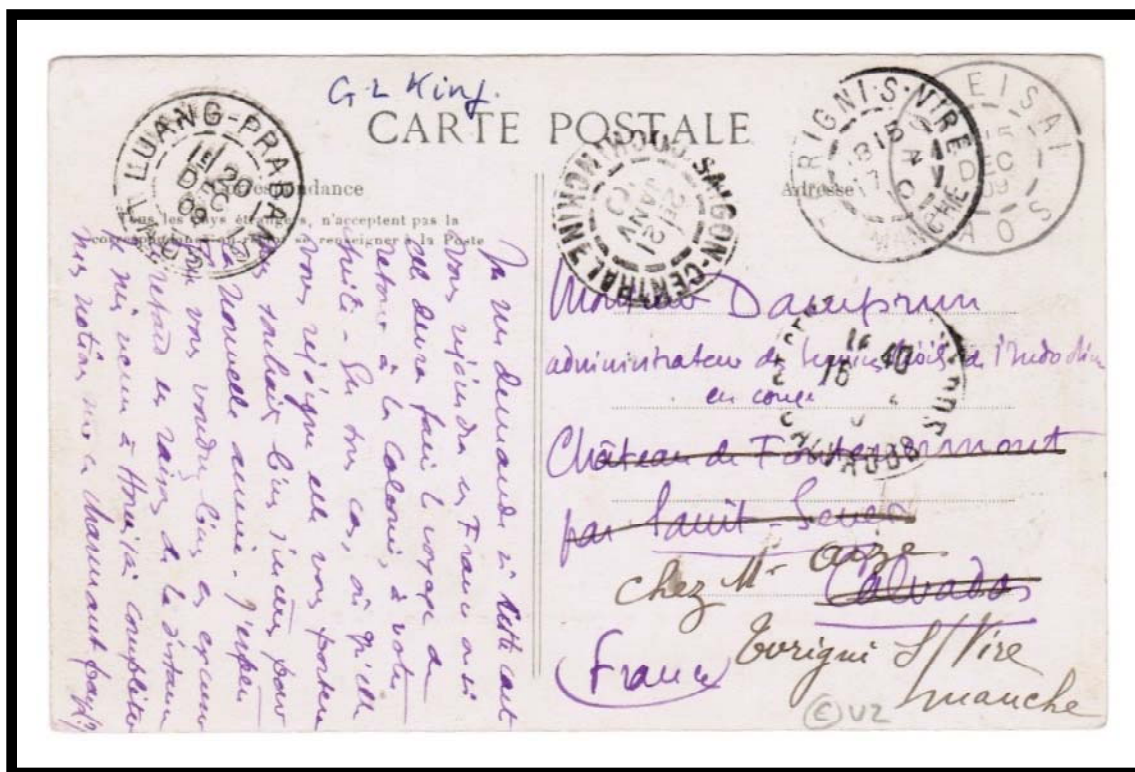


# HOUEISAI LAOS

The post office at Houeissai came from Xieng-Khong and opened on 3 February 1904. An early postmark was a type E2 device. Previously unreported, this is the earliest known example of Houeissai's type E2 postmark.



POSTMARK TYPE: E2  
PERIOD OF USE: 1909



## POSTAL MARKINGS

HOUEISAI LAOS 15 DEC 09  
LUANG-PRABANG LAOS 20 DEC 09  
SAIGON-CENTRAL COCHINCHINE 21 JANV 10  
SAINT SEVE CALVADOS 16-2 10  
TORIGNI S VIRE MANCHE 17-2 10

## REVERSE

HOUEISAI LAOS 15 DEC 09

## HOUEISAI LAOS

While postmarks with the hyphenated "HOUEI-SAI" spelling were in service, the post office also used postmarks with the unhyphenated "HOUEISAI" spelling. This example of a type G postmark was previously unknown.



POSTMARK TYPE: G  
PERIOD OF USE: 1937



POSTAL MARKINGS  
HOUEISAI LAOS 25-8 37  
REVERSE  
CHIENGRAI 1.9.37  
BANGKOK G.P.O.  
PARIS R.P. 2 DISTRIBUTION 2 • X 1937

## KAMTONG IAI LAOS

The Kamtong lai post office opened in 1895. Its first reported postmark was a type E2 device. This example (with an inverted month) from 1910 is the latest known use of Kamtong lai's E2 postmark.



POSTMARK TYPE: E2  
PERIOD OF USE: 1897-1910



POSTAL MARKINGS  
KAMTONG IAI LAOS 15 NOV 10  
REVERSE  
SAIGON-CENTRAL COCHINCHINE 21 NOV 10  
LYON 2 RHONE 15-12 10

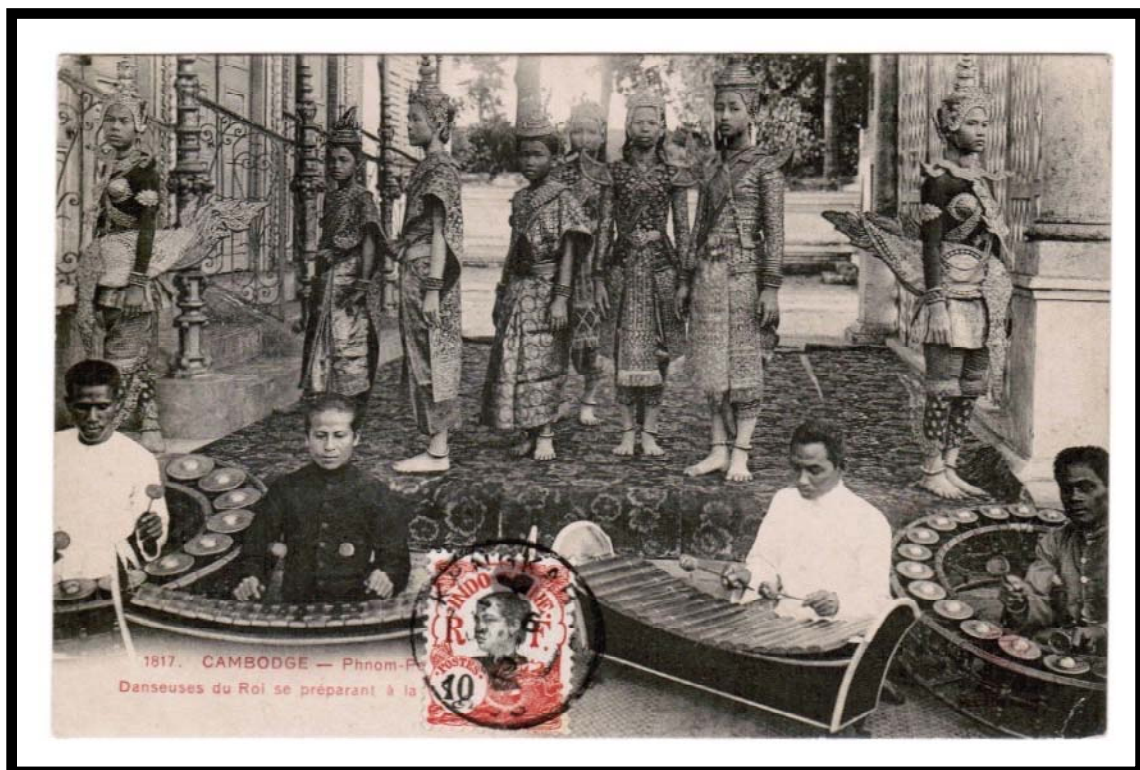


## KENGKABAO LAOS

The Kengkabao post office operated from 1912 through 18 February 1926. Its earliest postmark was a type E1 device that is only known from the first year of operation 1912.



POSTMARK TYPE: E1  
PERIOD OF USE: 1912



POSTAL MARKINGS  
KENGKABAO LAOS 6 JUIL 12  
REVERSE  
SAVANNAKHET LAOS 6 JUIL 12

KENGKABAO  
LAOS

In addition to the type E1 format, Kengkabao had a postmark in the E1(ch) format where the month was indicated by a numeral instead of an abbreviation. The first year of use for the type E1(ch) postmark was 1914.



POSTMARK TYPE: E1(ch)  
PERIOD OF USE: 1914-17



POSTAL MARKINGS  
KENGKABAO LAOS 5-4 14  
REVERSE  
SAVANNAKHET LAOS 10-4 14

# KENGKOK LAOS

The Kengkok post office operated from 6 May 1921 until 1 April 1932. Its first postmark was a type F1 device that has been reported as early as 1923.



POSTMARK TYPE: F1  
PERIOD OF USE: 1923-28



## POSTAL MARKINGS

KENGKOK LAOS 5 AOUT 23  
CHÊNE-BOUGERIES 18.IX.23

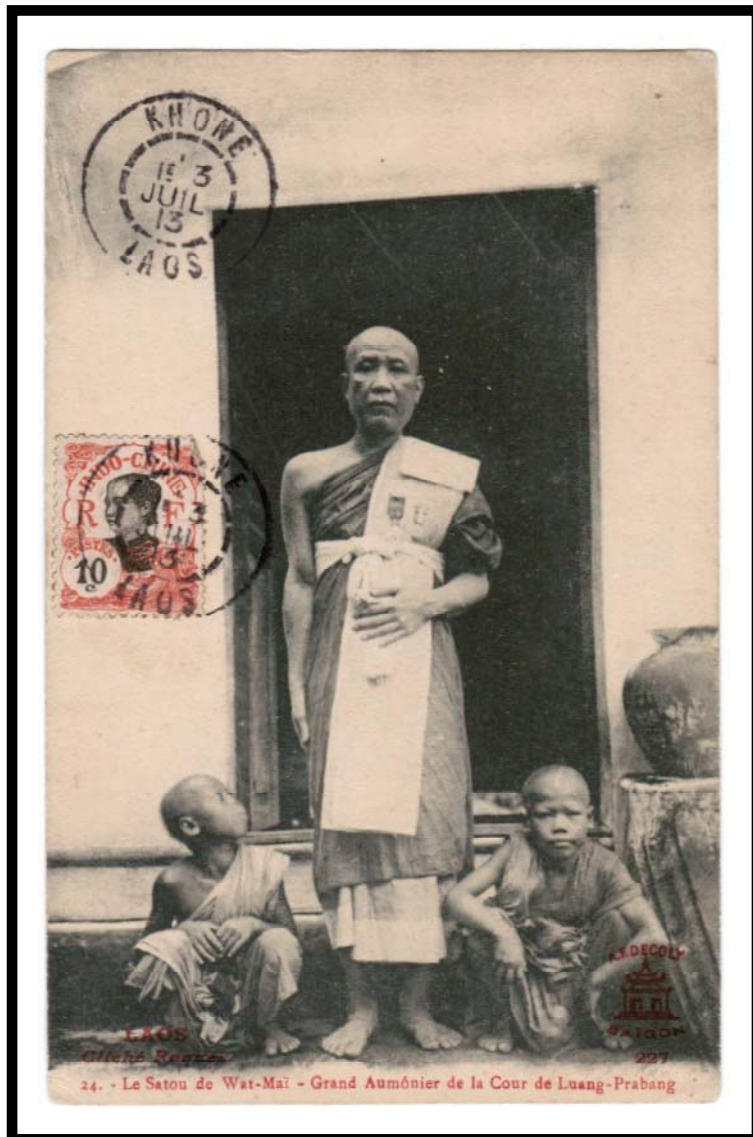
## REVERSE

SAVANNAKHET LAOS 7-823  
SAIGON-CENTRAL COCHINCHINE 14-8 23  
EMMENMATT 18.IX.23



## KHONE LAOS

At various times, Khone was under the control of Cambodia and Thailand. Khone's first Lao postmark was a type E2 device that remained in service for over two decades.



POSTMARK TYPE: E2  
PERIOD OF USE: 1903-26

POSTAL MARKINGS  
KHONE LAOS 3 JUIL 13

# KHONE LAOS

Before 1893, Khone was considered part of Cambodia. Its first Laotian postmark was a type E2 device. The last recorded year of its use was 1926.



POSTMARK TYPE: E2  
PERIOD OF USE: 1907-26



## POSTAL MARKINGS

KHONE LAOS 5 JUL 26

boxed R with manuscript registration number

REVERSE

ST ETIENNE R.P. DENFERT LOIRE 8-8 26

ST ETIENNE-FOURNEIPOY 9-8 26

KHONE  
LAOS

In 1941, Khone was ceded to Thailand. Khone's type G1 format is the last known postmark style from the town.



POSTMARK TYPE: G1  
PERIOD OF USE: 1928-31



POSTAL MARKINGS

KHONE LAOS 28-3 30  
registration label

REVERSE

MARSEILLE B<sup>CHES</sup> DU RHONE 2-5 30

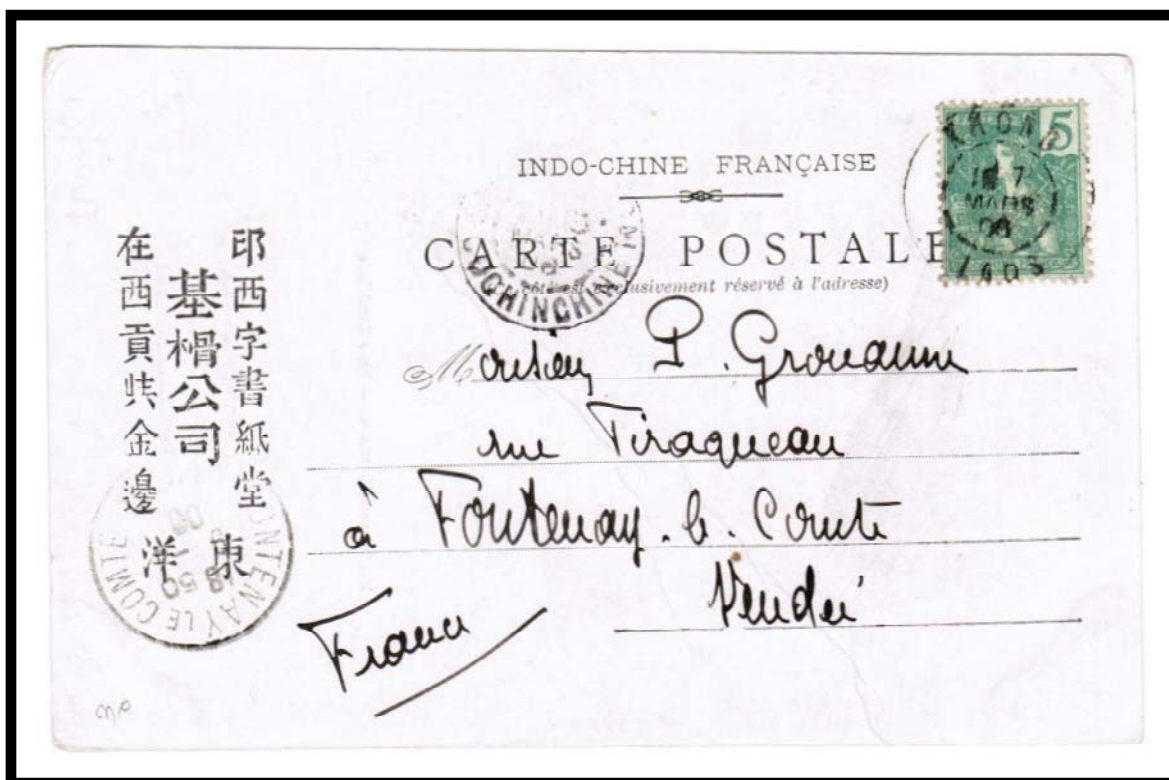


# KHONG LAOS

The post office at Khong opened in 1893, but during 1894-5 it employed a postmark that indicated Khong was in Cambodia. The type E2 postmark for Laos is known from 1897 to 1913.



POSTMARK TYPE: E2  
PERIOD OF USE: 1897-1913



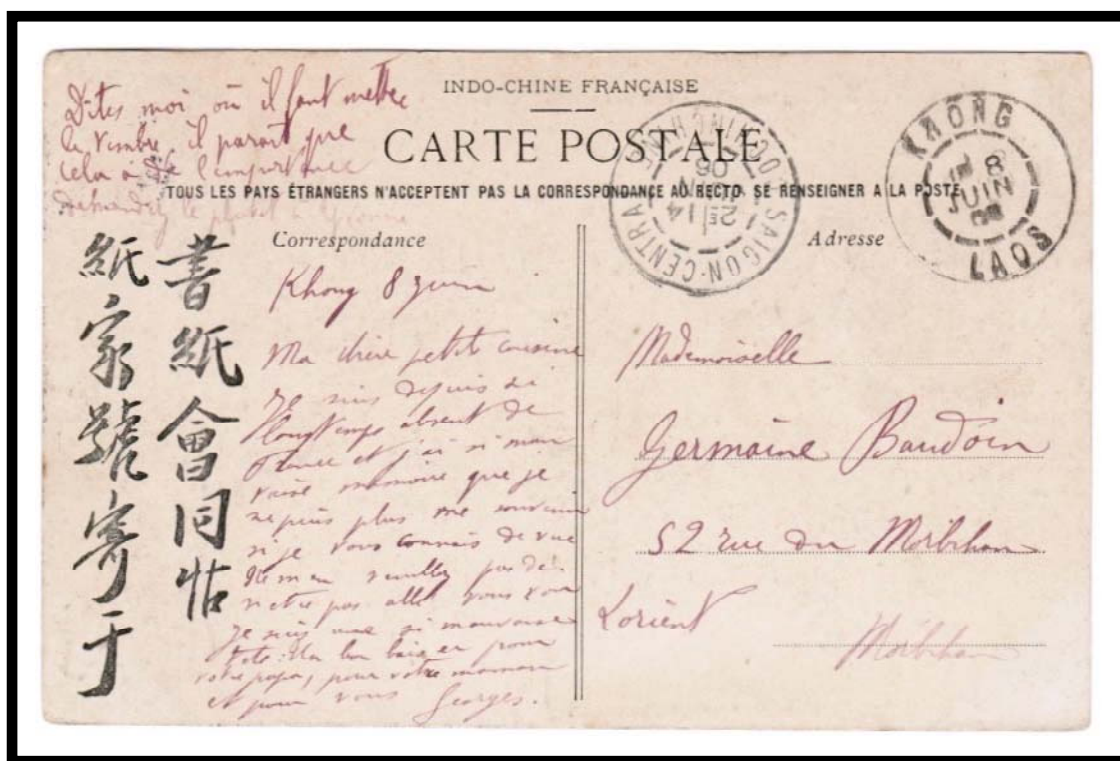
POSTAL MARKINGS  
KHONG LAOS 7 MARS 06  
SAIGON-CENTRAL COCHINCHINE 13 MARS 06  
FONTENAY LE COMTE VENDÉE 9-4 06

# KHONG LAOS

The post office at Khong opened in 1893, but during 1894-5 it employed a postmark that indicated Khong was in Cambodia. Its type E2 postmark for Laos is known from 1897 to 1913.



POSTMARK TYPE: E2  
PERIOD OF USE: 1897-1913



POSTAL MARKINGS  
KHONG LAOS 8 JUIN 06  
SAIGON-CENTRAL COCHINCHINE 14 JUIN 06  
REVERSE  
KHONG LAOS 8 JUIN 06

KHONG  
LAOS

The last reported year of service for Khong's type E2 postmark was 1913. Here the E2 postmark was applied to a registered mailing to Paris in January 1913.



POSTMARK TYPE: E2  
PERIOD OF USE: 1897-1913



POSTAL MARKINGS

KHONG LAOS 30 JANV 13  
framed R with manuscript registration number

REVERSE

PARIS X DISTRIBUTION 12-3 13  
PARIS 7 RAYON CENTRAL 12-3 13



KHONG  
LAOS

On 4 December 1942, the Khong post office transitioned to Hatsaikhouné. Khong's last postmark was a type G1 device that first saw service in 1927.



POSTMARK TYPE: G1  
PERIOD OF USE: 1927-32



POSTAL MARKINGS  
KHONG LAOS 1412 27

## KHONG LAOS

The last postmark known from Khong was the type G1 format. The latest known use is from 1939.



POSTMARK TYPE: G1  
PERIOD OF USE: 1927-39



POSTAL MARKINGS

KHONG LAOS 4-3 39

REVERS

KRATIE CAMBODGE 4-3 39

SAIGON-CENTRAL COCHINCHINE 5 AVR 39

# LUANG-PRABANG LAOS

Luang-Prabang's first recorded postmark is the type D1 format. This postmark remained in service for over a quarter of a century.



POSTMARK TYPE: D1  
PERIOD OF USE: 1896-1925



POSTAL MARKINGS  
LUANG-PRABANG LAOS 11 NOV. 20



LUANG-PRABANG  
LAOS

This variation of Luang-Prabang's type D1 postmark presents a four-digit year, "1900." Typically, only the last two digits appeared in postmarks.



POSTMARK TYPE: D1  
PERIOD OF USE: 1896-1925



POSTAL MARKINGS

LUANG-PRABANG LAOS 8 OCT. 1900  
framed R with manuscript registration number

REVERSE

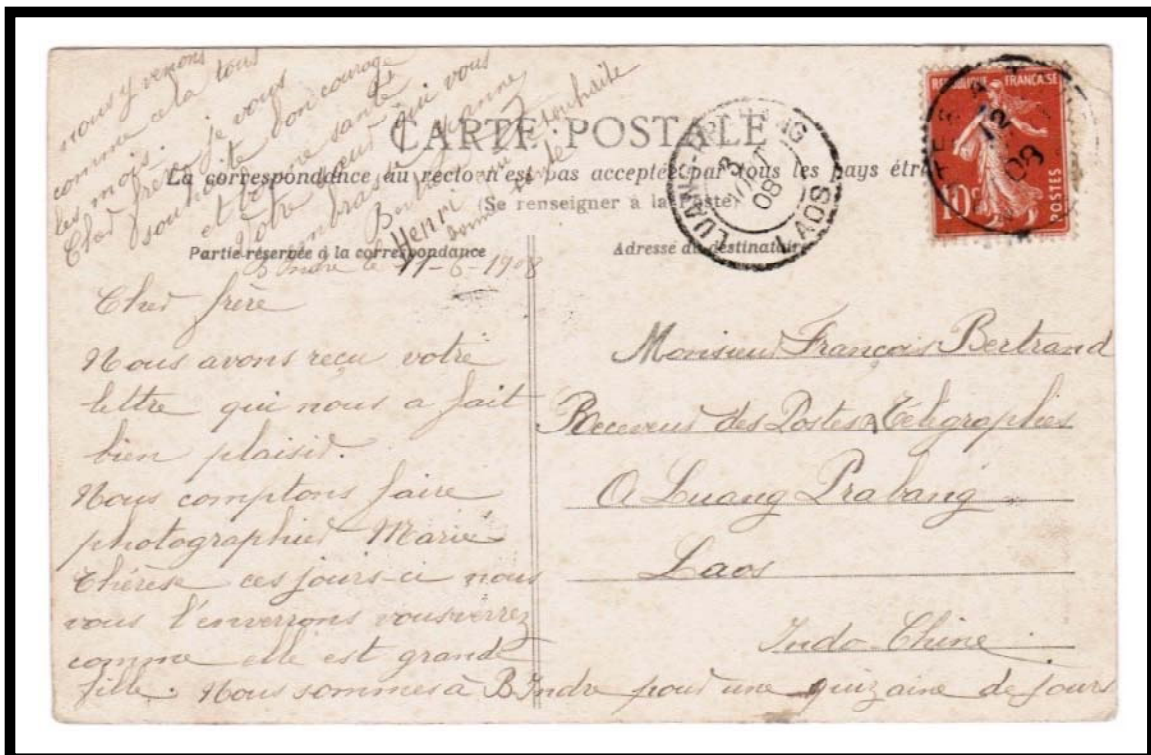
VIENTIANE LAOS 13 OCT 00  
SAIGON-CENTRAL COCHINCHINE 24 OCT 00  
CLERMONT-FERRAND PUY DE DOME 21 NOV 00  
THIERS PUY DE DOME 21 NOV 00

## LUANG-PRABANG LAOS

While postmarks were applied to outgoing mail, they could also be used as arrival markings as in this case of a postcard sent from France to Luang-Prabang in 1908.



POSTMARK TYPE: D1  
PERIOD OF USE: 1896-1925



POSTAL MARKINGS  
LUANG-PRABANG LAOS 3 AOUT 08

## LUANG-PRABANG LAOS

The Luang-Prabang post office opened on 1 January 1895. Among its first postmarks was an E2 device that remained in service for over three decades. This example with a type E2 postmark from 1897 represents an early use for an internal mailing from Luang-Prabang to Saigon.



POSTMARK TYPE: E2  
PERIOD OF USE: 1896-1929



POSTAL MARKINGS  
LUANG-PRABANG LAOS 20 NOV. 97



LUANG-PRABANG  
LAOS

In the E2(ch) format, the month was represented by a numeral instead of an abbreviation. Luang-Prabang's E2(ch) postmark was in use for over 15 years.



POSTMARK TYPE: E2(ch)  
PERIOD OF USE: 1913-29



POSTAL MARKINGS  
LUANG-PRABANG LAOS 28-9 18  
REVERSE  
VIENTIANE LAOS 9-10 18  
SAIGON-CENTRAL COCHINCHINE 22-10 18  
slogan handstamp

## LUANG-PRABANG LAOS

Luang-Prabang's long-lived type E2 postmark was in service for over three decades.



POSTMARK TYPE: E2  
PERIOD OF USE: 1896-1929



POSTAL MARKINGS  
LUANG-PRABANG LAOS 16 JANV 09  
PORTO-CENTRAL 18.03.09

## LUANG-PRABANG LAOS

Luang-Prabang's new style type G postmark was introduced in 1930. This was the last postmark to use the hyphenated "LUANG-PRABANG" spelling.



POSTMARK TYPE: G  
PERIOD OF USE: 1930-37



### POSTAL MARKINGS

LUANG-PRABANG LAOS 3-4 30  
registration label

### REVERSE

SAIGON-CENTRAL COCHINCHINE 25-4 30  
SI GEORGES DE REINEMBAULT ILLE ET VILAINE



LUANG-PRA-BANG  
LAOS

Only a single postmark used the doubly-hyphenated "LUANG-PRA-BANG" spelling. It was in the type G format and first appeared in 1939.



POSTMARK TYPE: G  
PERIOD OF USE: 1939-51



POSTAL MARKINGS  
LUANG-PRA-BANG LAOS 14-2 39  
REVERSE  
HANOI R.P. TONKIN 17-2 39

## MUONG BOUN NEUA LAOS

The Mounng Boun Neua post office operated from 1917 to 1945. The first postmark with spaces rather than hyphens separating parts of the name was a type E1 device. This 1924 example is the earliest known use of this postmark. Apparently, the central date plug was loose as the position of the date varies in the two strikes seen here.



POSTMARK TYPE: E1  
PERIOD OF USE: 1924-28



POSTAL MARKINGS  
MUONG BOUN NEUA LAOS 2 JANV 24  
REVERSE  
PHONGSALY LAOS 4 JANV 24  
DIENBIENPHU TONKIN 13 JANV 24  
SONLA TONKIN 19 JANV 24  
HANOI TONKIN 26-1 24

MUONG BOUN TAY  
LAOS

The post office at Muong-Boun-Tay opened on 6 May 1921. Its first postmark was a type F1 device that used the unhyphenated spelling of the town's name.



POSTMARK TYPE: F1  
PERIOD OF USE: 1926-29



POSTAL MARKINGS

MUONG BOUN TAY LAOS 12 NOV 26

REVERSE

PHONGSALY LAOS 14 NOV 26

LAICHAU TONKIN 24 NOV 26

HAI-PHONG TONKIN 1-12 26



MUONG-BOUN-TAY  
LAOS

The only postmark for Muong-Boun-Tay that appeared with the hyphenated spelling was a type G device. Its first known year of use was in 1931.



POSTMARK TYPE: G  
PERIOD OF USE: 1931-40



POSTAL MARKINGS  
MUONG-BOUN-TAY LAOS 12-12 31

## MUONG-HOU-NEUA HAUT LAOS

In 1898, Muong-Hou became Muong-Hou-Neua. Before the post office closed on 8 February 1903, it postmarked mail with a type D1 device that had "HAUT LAOS" at its base. The post office reopened on 14 December 1905.



POSTMARK TYPE: D1  
PERIOD OF USE: 1902



### POSTAL MARKINGS

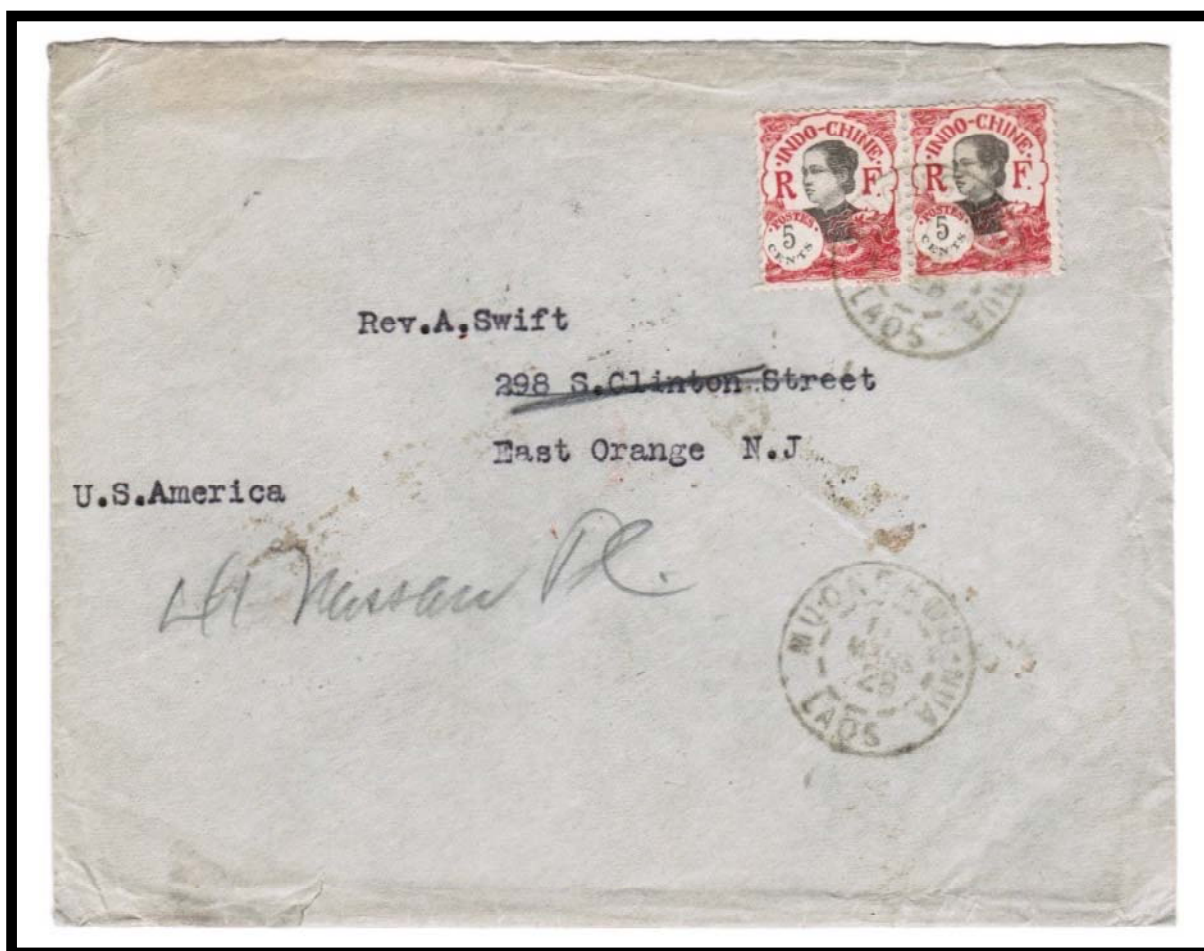
SZEMAO 9 DEC 10  
MUONG-HOU-NEUA HAUT LAOS 27 DEC 01  
framed R with manuscript registration number  
MUONG-NGOI HAUT LAOS 12 JANV. 02  
DIEN BIEN PHU TONKIN 21 JANV 02  
VAN-BU TONKIN 21 JANV 02  
HANOI TONKIN 3 FEVR 02  
SAINT-MALO ILLE-ET-VILANE 11-3 02

MUONG-HOU-NUA  
LAOS

Muong-Hou-Nua was the new name given to Muong-Hou in 1898. Its type E2 postmark was in use through 1928.



POSTMARK TYPE: E2  
PERIOD OF USE: 1918-28



POSTAL MARKINGS  
MUONG-HOU-NUA LAOS 11 MARS 28  
REVERSE  
LAICHAU TONKIN 28 MARS 28  
LAO-KAY TONKIN 2-4 28



MUONG-HOU-NUA  
LAOS

This example of a type G postmark from 1938 with the hyphenated Muong-Hou-Nua spelling has not previously been reported.



POSTMARK TYPE: G  
PERIOD OF USE: 1938



POSTAL MARKINGS

MUONG-HOU-NUA LAOS 28 7 38  
plain R with manuscript registration number

REVERSE

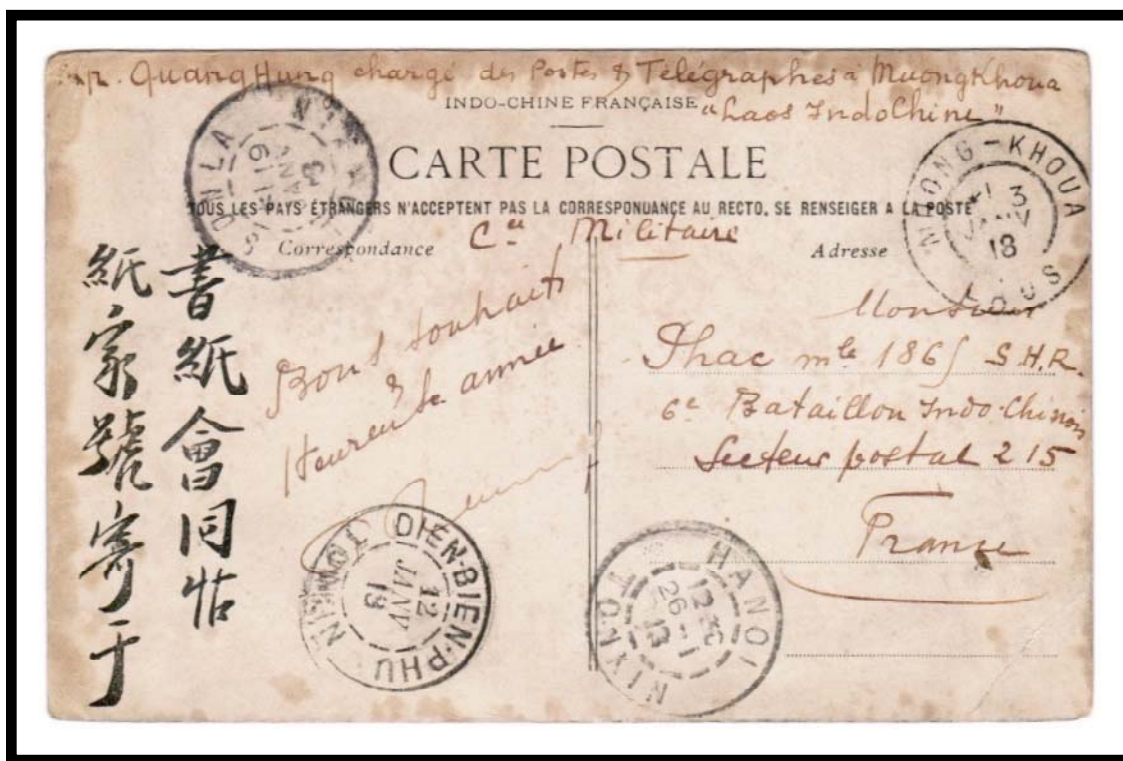
MUONG-OU-TAY LAOS 28-7 38  
PHONGSALY LAOS 1-8 38  
HANOI R.P. TONKIN 21-8 37

# MUONG-KHOUA LAOS

The Muong-Khoua post office operated from 1915 to 1 April 1937. Its first reported postmark is a type E1 device that is only known from a single year, 1918.



POSTMARK TYPE: E1  
PERIOD OF USE: 1918



## POSTAL MARKINGS

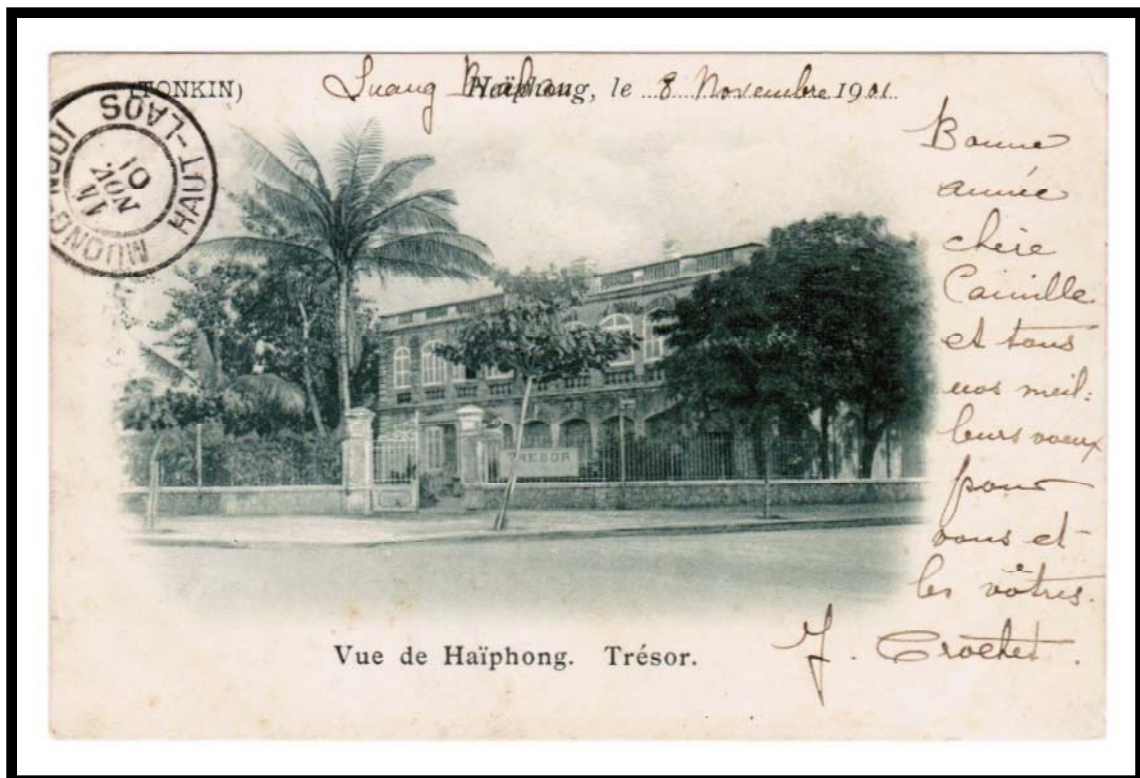
MUONG-KHOUA LAOS 3 JANV 18  
DIEN-BIEN-PHU TONKIN 12 JANV 18  
SONLA TONKIN 19 JANV 18  
HANOI TONKIN 26-1 18

## MUONG-NGOI HAUT LAOS

When it opened in 1900, the Muong-Ngoi post office initially used a postmark with "HAUT LAOS" ("Upper Laos") at the base. Here, the postmark was applied as a transit marking on a postcard sent from Luang-Prabang, Laos to Paris in 1901.



POSTMARK TYPE: E1  
PERIOD OF USE: 1900-03



POSTAL MARKINGS  
MUONG-NGOI HAUT LAOS 14 NOV. 01  
REVERSE  
LUANG-PRABANG LAOS 9 NOV 01  
HANOI TONKIN 2 DEC 01

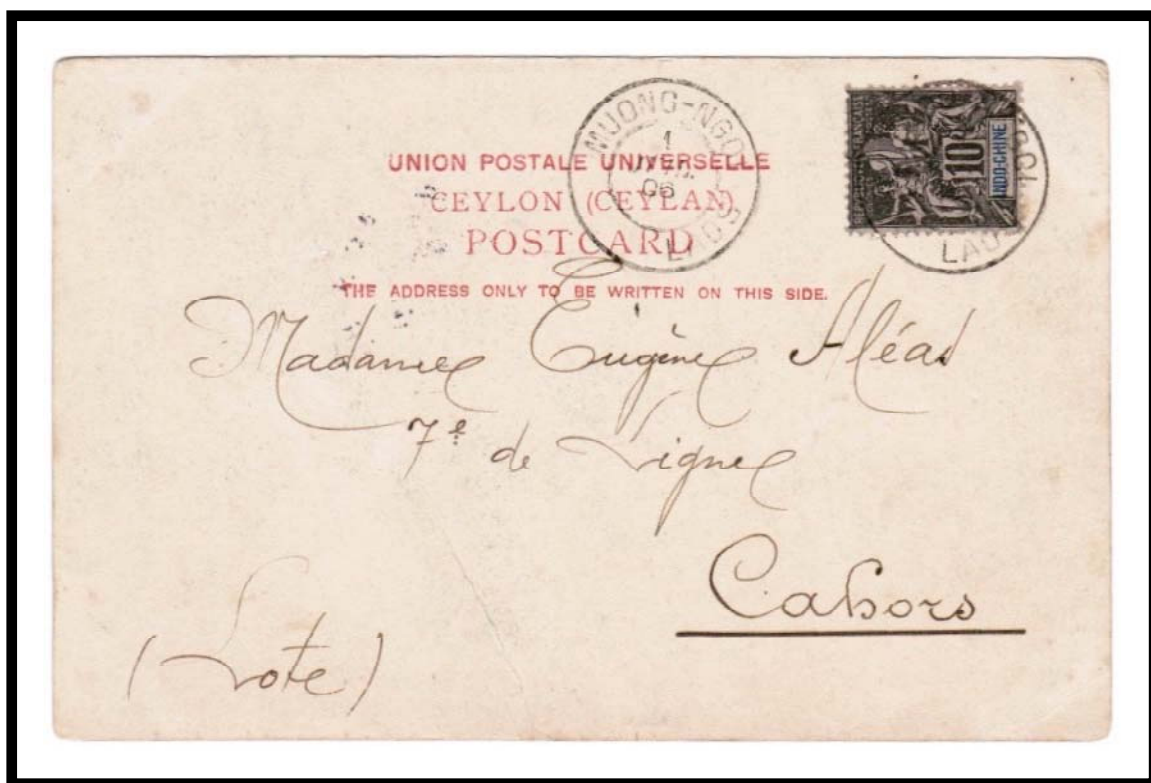


MUONG-NGOI  
LAOS

As with other similar postmarks, Muong-Ngoi's "HAUT" was scratched away from the type E1 postmark resulting in an unbalanced format. This postmark was in use for only two years.



POSTMARK TYPE: E1  
PERIOD OF USE: 1905-06



POSTAL MARKINGS  
MUONG-NGOI LAOS 1 JUL. 06

# MUONGNGOI LAOS

Postmarks with the single word spelling “MUONGNGOI” appeared in parallel with those exhibiting the hyphenated spelling. This example from 1907 is the earliest known use of Muongngoi’s type E2 postmark.



POSTMARK TYPE: E2  
PERIOD OF USE: 1907-11



## POSTAL MARKINGS

MUONGNGOI LAOS 24 JANV. 07  
LUANG-PRABANG LAOS 27 JANV 07  
SAIGON-CENTRAL COCHINCHINE 7 MARS 07

## MUONG-OU-TAY LAOS

The Muong-Ou-Tay post office operated from 1920 through 1945. Its last known postmark was a type G device.



POSTMARK TYPE: G  
PERIOD OF USE: 1933-40



### POSTAL MARKINGS

MUONG-OU-TAY LAOS 3-12 37  
registration label

### REVERSE

PHONGSALY LAOS 6-12 37  
HANOI R.P. TONKIN 21-12 37  
PARIS XI DISTRIBUTION 1-1 38



MUONG PHALANE  
LAOS

The only recorded postmark with the space between “MUONG” and “PHALANE” was in the type F1 format. It remained in service for a decade.



POSTMARK TYPE: F1  
PERIOD OF USE: 1927-39



POSTAL MARKINGS  
MUONG PHALANE LAOS 21 DEC 27

## MUONG-PHIN LAOS

The post office at Muong-Phin reportedly was operational from 1894 through 15 November 1904 when it moved to Tchepone. This previously unknown example of a type E2 postmark from Muong-Phin in 1905 suggests that the closing date of the post office may have been later.



POSTMARK TYPE: E2  
PERIOD OF USE: 1905



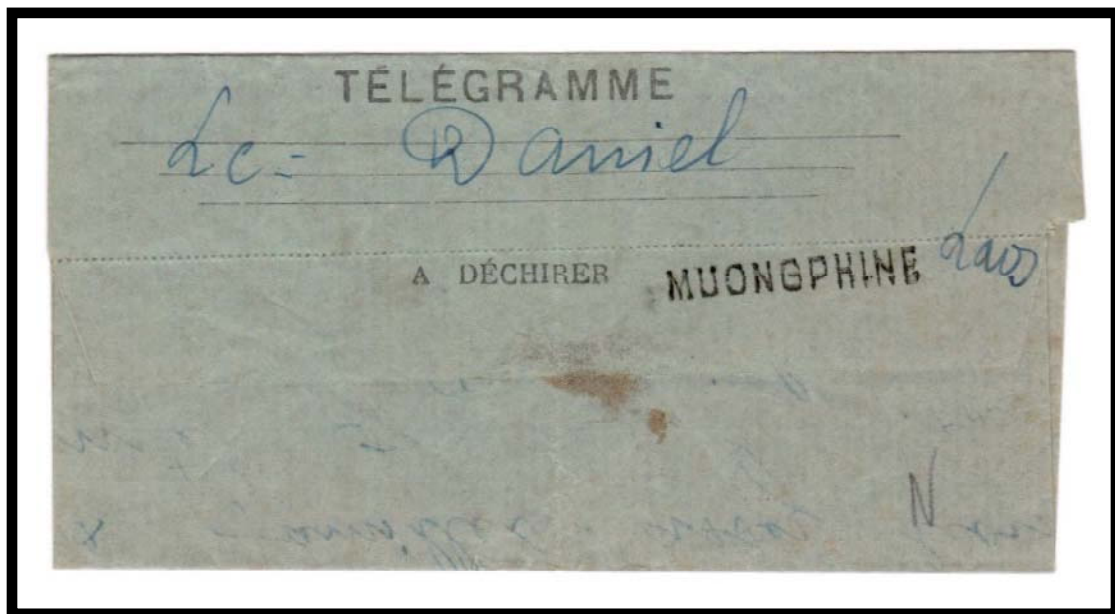
POSTAL MARKINGS  
MUONG-PHIN LAOS 1 FEVR 05  
BASSAC LAOS 8 FEVR 05  
SAIGON-CENTRAL COCHINCHINE 16 FEVR 05

## MUONGPHINE (LAOS)

Being a part of the same overall organization (Post, Telephone and Telegraph), offices sometimes used the same devices for marking correspondence. Straight-line handstamps as this example from Mongphine (spelling with an added "e" at the end) were commonly used for telegrams but also appear on letters and packages sent through the mails.

## MUONG PHINE

POSTMARK TYPE: straight-line  
PERIOD OF USE: c. 1900-1920



POSTAL MARKINGS  
MUONGPHINE



# MUONG-SIN LAOS

Previously only recorded as late as 1909, this example from 1910 is the latest known use of Muong-Sin's type D1 postmark.



POSTMARK TYPE: D1  
PERIOD OF USE: 1900-10



## POSTAL MARKINGS

HAUTEVILLE AIN 2-7 10  
SAIGON-CENTRAL COCHINCHINE 26 JUIL 10  
DIEN-BIEN-PHU TONKIN 20 AOUT 10  
LUANG-PRABANG LAOS 28 AOUT 10  
HOUESAI LAOS 11 SEPT 10  
MUONG-SIN LAOS 20 SEPT. 10

MUONGSING  
LAOS

The only postmark that ever exhibited the single-word "MUONGSING" spelling was a type E2(ch) device. This postmark remained in service for a decade.



POSTMARK TYPE: E2(ch)  
PERIOD OF USE: 1913-24



POSTAL MARKINGS

MUONGSING LAOS 15-4 14

REVERSE

HOUEISAI LAOS 23 AVRIL 14

LUANG-PRABANG LAOS 28-4 14

SAVANNAKHET LAOS 14 MAI 14

SAIGON-CENTRAL COCHINCHINE 5-6 14

LYON RHONE 2 JUIL 14

## MUONGSING LAOS

"MUONGSING" was a spelling variant of "MUONG-SIN." The "MUONGSING" spelling only appeared in the type E2(ch) format. This specimen from 1929 is the latest known use of the postmark.



POSTMARK TYPE: E2(ch)  
PERIOD OF USE: 1909-29



POSTAL MARKINGS  
MUONGSING LAOS 2-3 29  
REVERSE  
LUANG-PRABANG LAOS 5-3 29  
DEAUVILLE CALVADOS 13. V. 29



# NAKAI LAOS

The Nakai post office was open from 17 April 1922 to 1 January 1932. Nakai's only known postmark is in the type F1 format.



POSTMARK TYPE: F1  
PERIOD OF USE: 1923-28



## POSTAL MARKINGS

NAKAI LAOS 14 JUIN 27

## REVERSE

THAKEK LAOS 15-6 27

HANOI TONKIN 22-6 27

NAMTHA  
LAOS

No postmark has previously been reported from the town of Mantha. This example from March 1957 may be unique.



POSTMARK TYPE: G1  
PERIOD OF USE: 1957



POSTAL MARKINGS  
NAMTHA LAOS 5 3 1957

NAPE  
LAOS

The Nape post office opened on 20 June 1922. Its first reported postmark was a type G device. Nape's last year of use of the type G1 postmark was 1932.



POSTMARK TYPE: G1  
PERIOD OF USE: 1923-32



POSTAL MARKINGS

NAPE LAOS 6-11 32  
registration label

framed Saigon - Marseille routing instruction handstamp

REVERSE

VINH ANNAM 11-11 32  
SAIGON-CENTRAL COCHINCHINE 14-11 32  
PARIS XVI DISTRIBUTION 29-11 32



NAPE  
LAOS

Nape's type G postmark appeared during a later period than the type G1 postmark. The type G format was Nape's last known postmark before the post office closed in 1946.



POSTMARK TYPE: G  
PERIOD OF USE: 1927-40



POSTAL MARKINGS

NAPE LAOS 1-5 37  
registration label

REVERSE

VINH ANNAM 3-5 37  
HANOI R.P. TONKIN 4-5 37